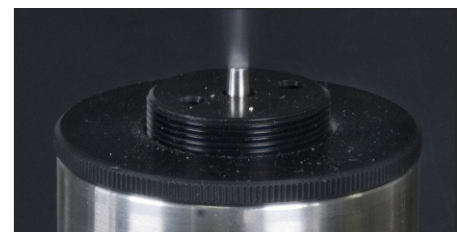
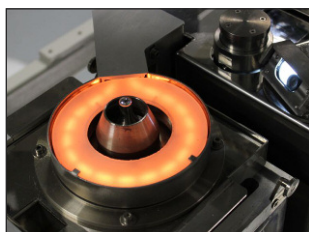
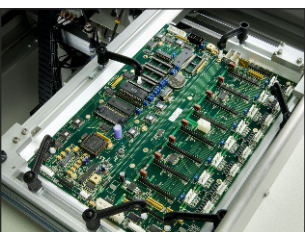
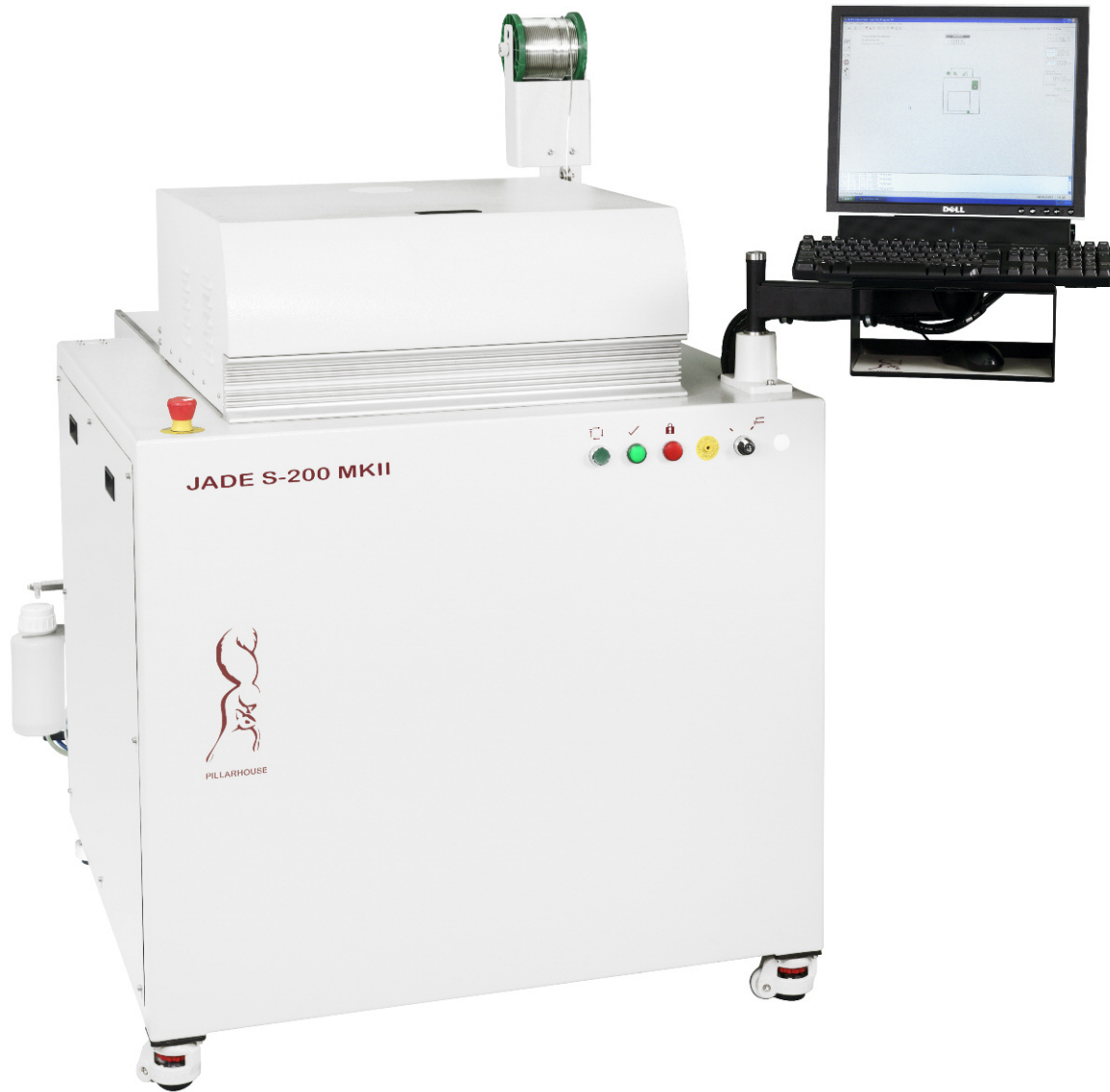


JADE MK II



Pillarhouse
INTERNATIONAL

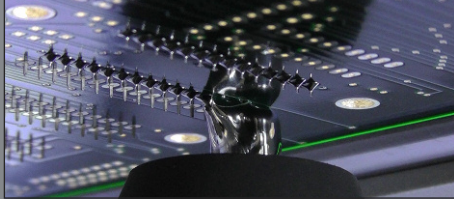
Entry-level single point selective soldering system



JADE MK II



Entry-level single point selective soldering system



Designed to meet the needs of the small/medium batch manufacturer who requires high levels of production flexibility, the Jade MK II entry-level system offers uncompromised selective soldering quality at a very low cost. The Jade MK II is a hand load system, incorporating a universally adjustable tooling carrier capable of accommodating PCB's or pallets up to 457 x 508mm.

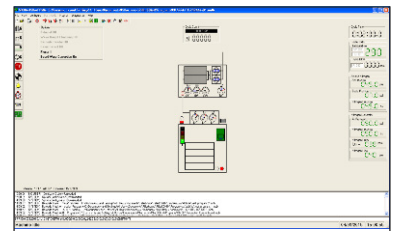
Our patented Drop-Jet design fluxer offers quick and effective flushing of the pressurised flux chamber. This helps to keep maintenance levels to a minimum whilst enabling use of higher solid content fluxes as well as water-soluble fluxes.

As part of the entry-level philosophy for this system, a low maintenance solder bath and pump mechanism has been developed which moves in three axes of movement whilst not limiting access to the PCB. Solder is applied using proven technology through our AP nozzle design or custom specialised nozzles, incorporating patented spiral solder return to bath technology offering reduced solder balling potential.

As with all Pillarhouse systems, the soldering process is enhanced by a hot Nitrogen curtain which provides an inert atmosphere. This method of soldering also assists in the prevention of oxidisation and provides a local preheat to the joint, thus reducing thermal shock to localised components.



1.5MM MICRO-NOZZLE

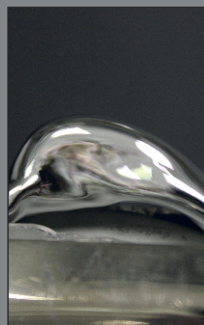


OPERATION

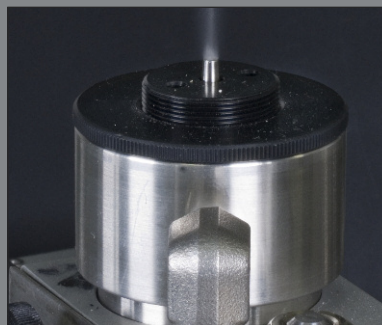
The Jade MKII is controlled by a PC, through PillarCOMM, a Windows® based 'Point & Click' interface with PCB image display, as illustrated above. Additionally, our PillarPAD offline package allows the operator to produce programs independently from the machine using Gerber data.



JET-TIP NOZZLE



JET-WAVE NOZZLE

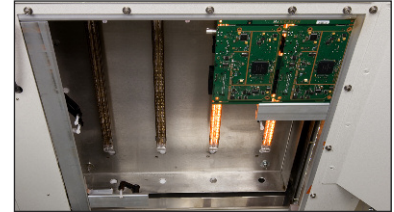


ULTRASONIC FLUX HEAD

PILLARGEN 40

Nitrogen generation system





TOPSIDE INSTANT IR PREHEAT



SOLDER BATH AND PUMP ASSEMBLY
WITH DROP-JET FLUX HEAD AND
PROGRAMMING CAMERA

STANDARD FEATURES

- Integral PC and machine mounted TFT monitor
- Inerted Nitrogen system
- Auto solder top-up (wire feed) & solder level detect
- Drop-Jet fluxer
- Set of AP style solder nozzle tips
- Internal fume extraction
- Colour programming camera
- Solder wave height measurement and correction
- Universally adjustable tooling carrier
- Thermal nozzle calibration system using integrated setting camera (requires manual correction)
- PillarCOMM Windows® based 'Point & Click' interface
- Lead-free compatible
- PillarPAD offline programming system
- Day-to-day service kit
- Multiple level password protection
- Manual fiducial correction system

MONITORING OPTIONS

- Flux presence sensor - thermistor style
- Flux spray, flow and spray & flow
- Pump rpm
- O₂ ppm
- Nitrogen flow

SYSTEM OPTIONS

- Top-side instant IR preheat
- Closed loop temperature control
 - via pyrometer or thermocouple
- Bottom-side IR ring heater
- Bottom-side hot Nitrogen selective preheat
- Automatic fiducial correction
- Ultrasonic fluxing
- Dual Drop-Jet / ultrasonic fluxing
- Laser PCB warp correction
- Micro nozzle assembly
- Solder reel identification
- Rapid change solder bath and pump system capability
 - does not include solder bath and pump
- Solder bath coding - identifies correct bath for program
 - only suitable for use with rapid change solder bath and pump system
- Encoders on X, Y and Z axis
- Larger PCB handling size
- Nitrogen generator

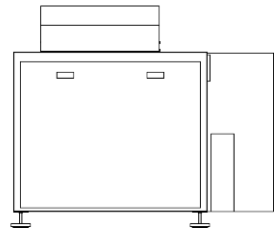
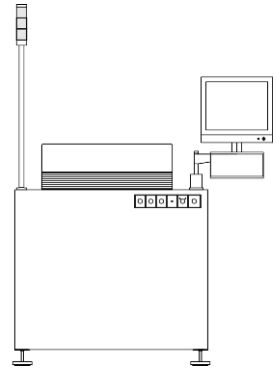
JADE MK II



Pillarhouse
INTERNATIONAL

SPECIFICATIONS

Height:	1403mm / 55" - excluding light stack
Width:	1000mm / 40"
Depth:	1351mm / 53"
Board size:	457mm x 508mm / 18"x 20" - larger PCB size available upon request
Edge clearance:	Above / below 3mm
Height clearance:	Above 90mm / below 40mm nominal Above 190mm - special application
Solder:	Most commonly used solder types - including lead-free
Solder pot capacity:	8kg
Applicators:	AP style - 2.5mm to 16mm dia. Extended AP style - 2.5mm to 20mm dia. Micro nozzle - 1.5mm to 2.5mm Jet-Tip style - 6mm to 20mm dia. Jet-Wave nozzle - up to 25mm width Special dedicated nozzles available upon request
Flux:	Low maintenance Drop-Jet system. Low solids (below 8%), no clean flux, pressurised and inerted system, optional water-soluble system available
X, Y & Z axis resolution:	0.1mm
Repeatability:	+/- 0.05mm
Nitrogen usage:	35 litres gas/min. 5 bar pressure
Nitrogen purity:	99.995% or better
Air supply pressure:	5 bar / 72 psi
Power supplies:	Single phase + PE
Voltage:	208V - 250V
Frequency:	50/60Hz
Power :	4kVA
Power with IR preheat:	6.5kVA - Top-side 8kVA - Top with bottom-side ring heater
Transport:	Hand load
Tooling:	Integral adjustable board guides, includes finger extensions and board clamps
Programming:	PillarCOMM Windows® based 'Point & Click' interface



Pillarhouse International Ltd.
Rodney Way, Widford, Chelmsford, Essex CM1 3BY UK
Pillarhouse USA, Inc.
201 Lively Blvd, Elk Grove Village, IL 60007 USA
Pillarhouse (Suzhou) Soldering Systems Co., Ltd.
11 Yuanqi Road, Xiangcheng, Suzhou, China 215131

www.pillarhouse.co.uk
Tel: +44 (0) 1245 491333 Fax: +44 (0) 1245 491331
www.pillarhouseusa.com
Tel: +1 847 593 9080 Fax: +1 847 593 9084
www.pillarhouse.cn
Tel: +86 512 6586 0460 Fax: +86 512 6959 0567